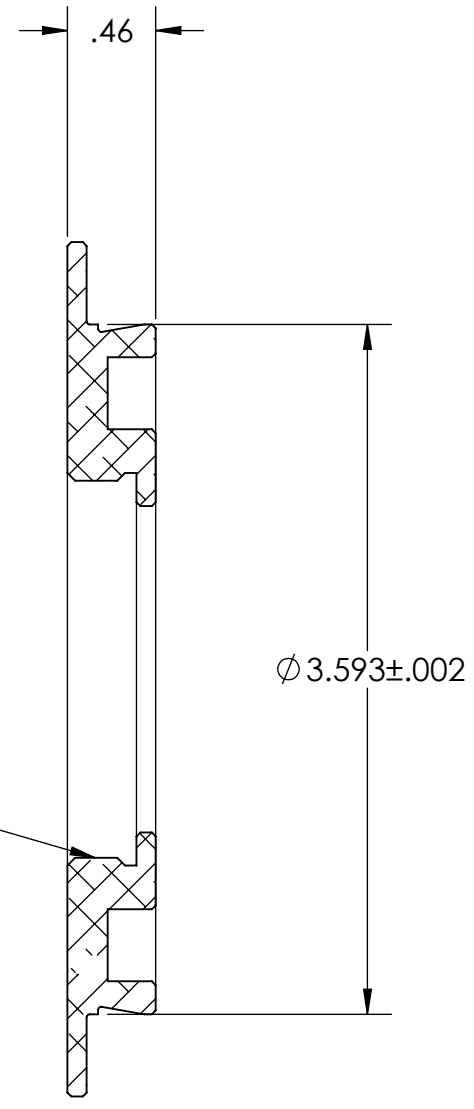


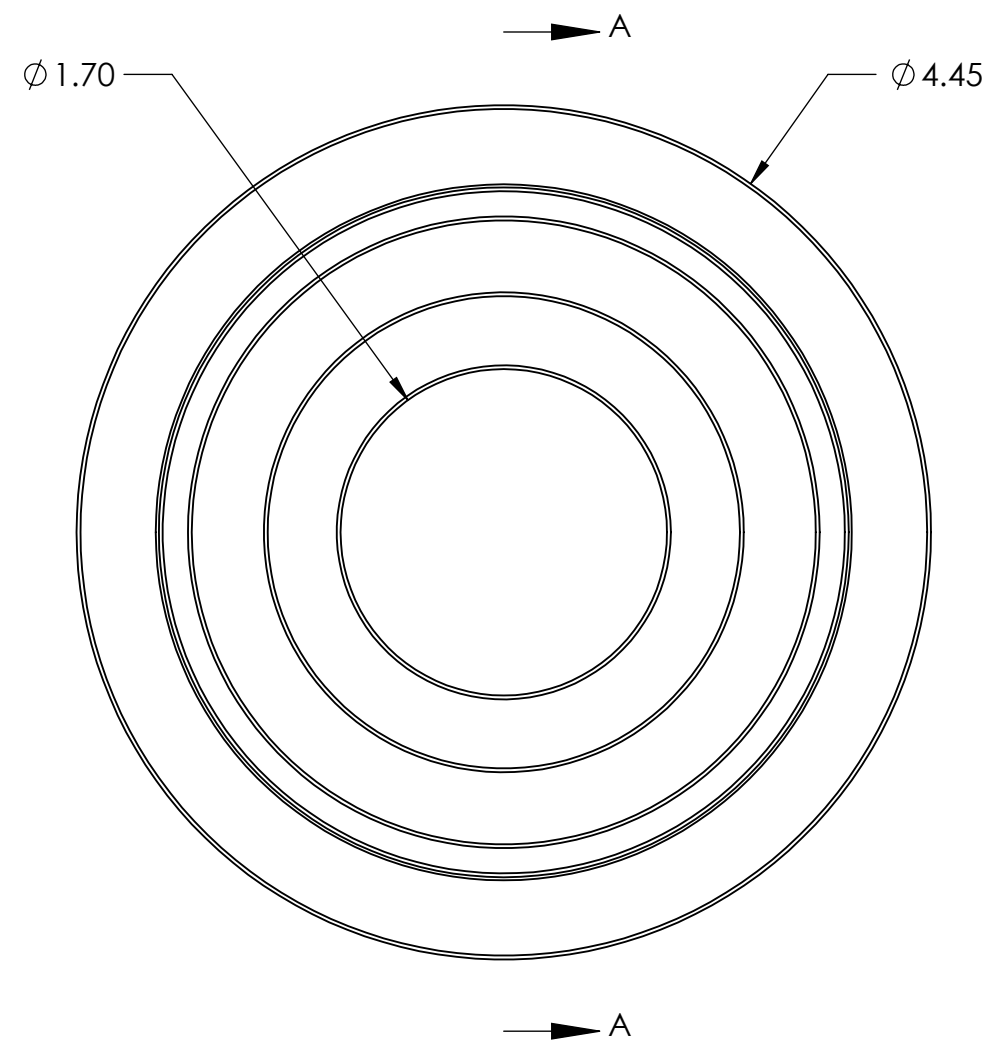
PN 4924
 STK. NO. 17829

D
C
B
A



SECTION A-A
 SCALE 1 : 1

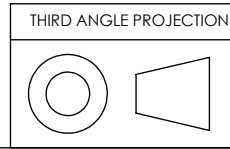
CELESTRON/MEADE THREAD
 (2.00 - 24 UNS-2B)



D
C
B
A

8 7 6 5 4 3 2 1

8 7 6 5 4 3 2 1



UNLESS OTHERWISE SPECIFIED: DIMENSIONS ARE IN INCHES TOLERANCES: FRACTIONAL ± ANGULAR: MACH ± BEND ± TWO PLACE DECIMAL ±.007 THREE PLACE DECIMAL ±.003	DRAWN	NAME	DATE	Optec, Inc.
	CHECKED	LD	05/05/09	
	ENG APPR.			
	MFG APPR.			
MATERIAL	6061-T6	CONTRACT		TITLE: 2" MEADE/CELESTRON TO OPTEC 3600
FINISH	SEE NOTES	OPTEC 3600		
DO NOT SCALE DRAWING		SIZE	DWG. NO.	
		B	17-06691	
		SCALE: 1:2	WEIGHT:	SHEET 1 OF 1