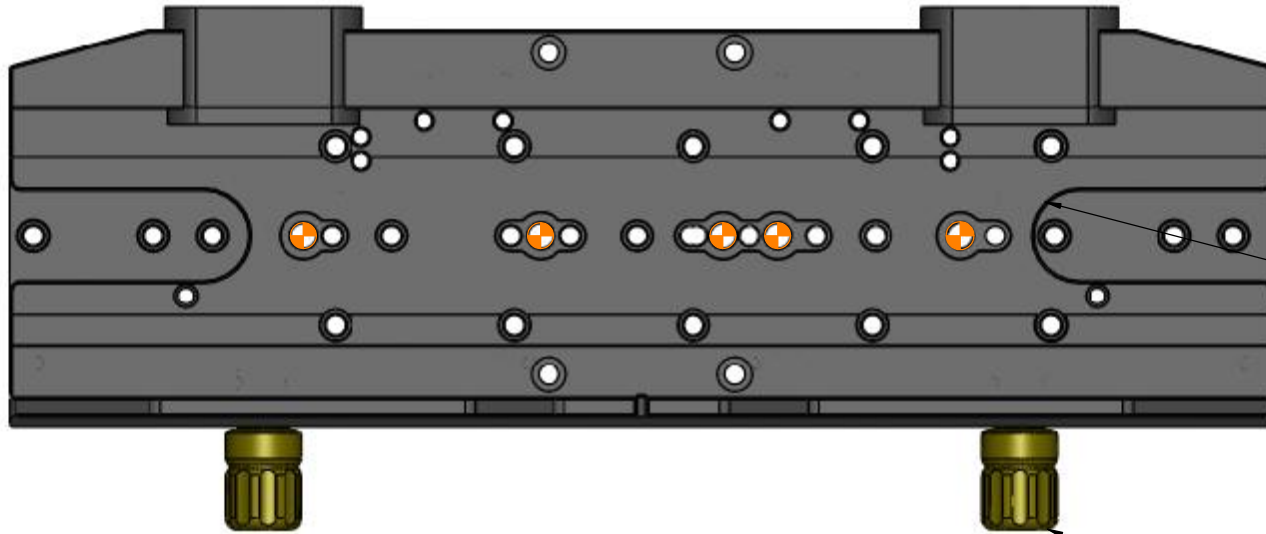


STOCK NO. 19237
 KELLER EZ-SADDLE

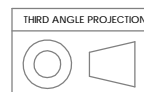


NOTCH FOR D PLATE
 1/4-20 SAFETY BOLT

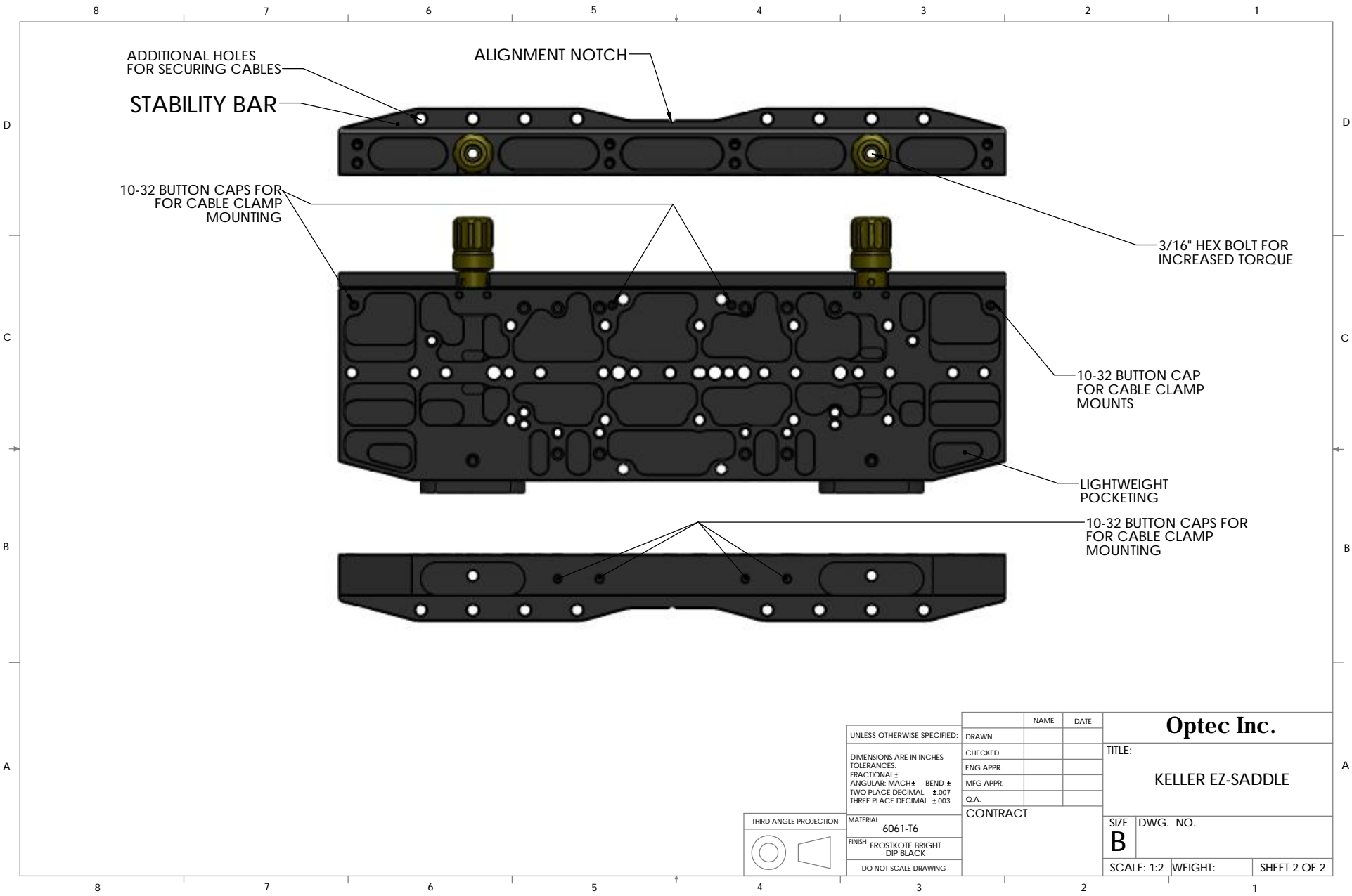
KNOBS ON OPPOSITE
 SIDE OF CLAMPS FOR
 STABLE LOADING AND
 UNLOADING

CELESTRON CGE PRO
 TWO 2-HOLE LOCATIONS AVAILABLE

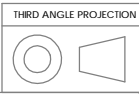
BOLT KIT INCLUDES:
 TWO (2) M8X25mm STAINLESS SHCS



UNLESS OTHERWISE SPECIFIED: DIMENSIONS ARE IN INCHES TOLERANCES: FRACTIONAL ± ANGULAR: MACH ± BEND ± TWO PLACE DECIMAL ±.007 THREE PLACE DECIMAL ±.003	DRAWN	NAME	DATE	Optec Inc. TITLE: KELLER EZ-SADDLE SIZE DWG. NO. B
	CHECKED			
	ENG APPR.			
	MFG APPR.			
MATERIAL 6061-T6	CONTRACT			SCALE: 2:3
FINISH SEE NOTES				WEIGHT:
DO NOT SCALE DRAWING				SHEET 1 OF 2



UNLESS OTHERWISE SPECIFIED: DIMENSIONS ARE IN INCHES TOLERANCES: FRACTIONAL ± ANGULAR: MACH ± BEND ± TWO PLACE DECIMAL ±.007 THREE PLACE DECIMAL ±.003	DRAWN	NAME	DATE	Optec Inc. TITLE: KELLER EZ-SADDLE
	CHECKED			
	ENG APPR.			
	MFG APPR.			
	Q.A.			SIZE DWG. NO.
	CONTRACT			B
				SCALE: 1:2 WEIGHT: SHEET 2 OF 2



MATERIAL
6061-T6

FINISH
FROSTKOTE BRIGHT
DIP BLACK

DO NOT SCALE DRAWING