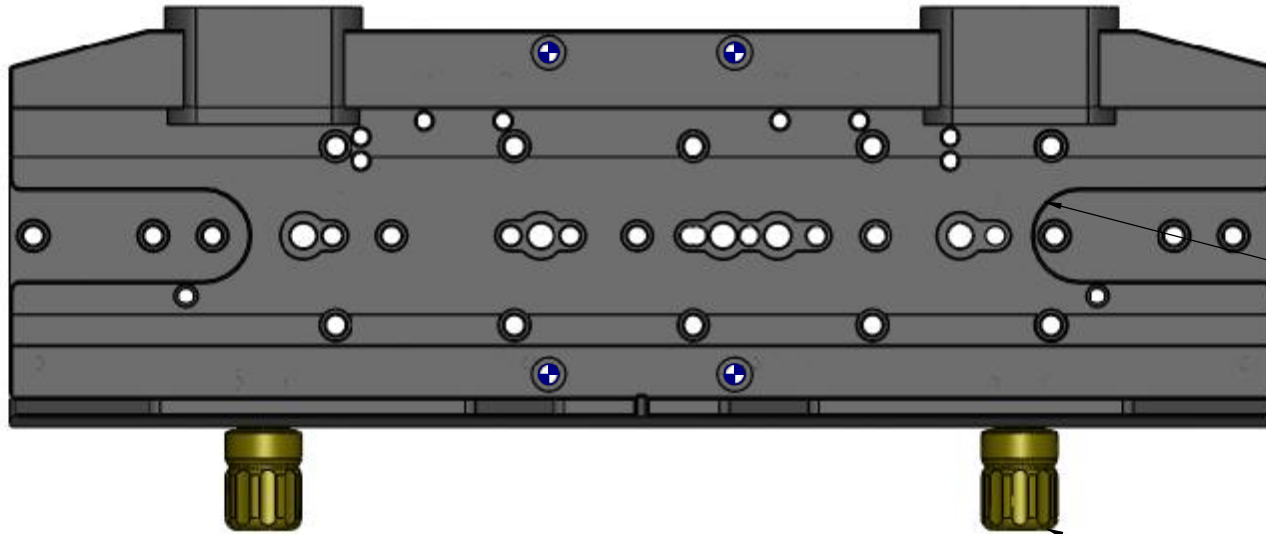


STOCK NO. 19241  
KELLER EZ-SADDLE

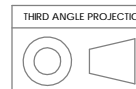


NOTCH FOR D PLATE  
1/4-20 SAFETY BOLT

KNOBS ON OPPOSITE  
SIDE OF CLAMPS FOR  
STABLE LOADING AND  
UNLOADING

MOUNTAIN INSTRUMENTS MI-250 MOUNT  
TWO 2-HOLE LOCATIONS AVAILABLE

BOLT KIT INCLUDES:  
FOUR 1/4-20 - 1 1/4



UNLESS OTHERWISE SPECIFIED: DIMENSIONS ARE IN INCHES TOLERANCES: FRACTIONAL ± ANGULAR: MACH ± BEND ± TWO PLACE DECIMAL ±.007 THREE PLACE DECIMAL ±.003	DRAWN	NAME	DATE	<b>Optec Inc.</b> TITLE: <b>KELLER EZ-SADDLE</b> SIZE DWG. NO. <b>B</b>
	CHECKED			
	ENG APPR.			
	MFG APPR.			
MATERIAL <b>6061-T6</b>	CONTRACT			SCALE: 2:3
FINISH SEE NOTES				WEIGHT:
DO NOT SCALE DRAWING				SHEET 1 OF 2

8

7

6

5

4

3

2

1

D

D

C

C

B

B

A

A

8

7

6

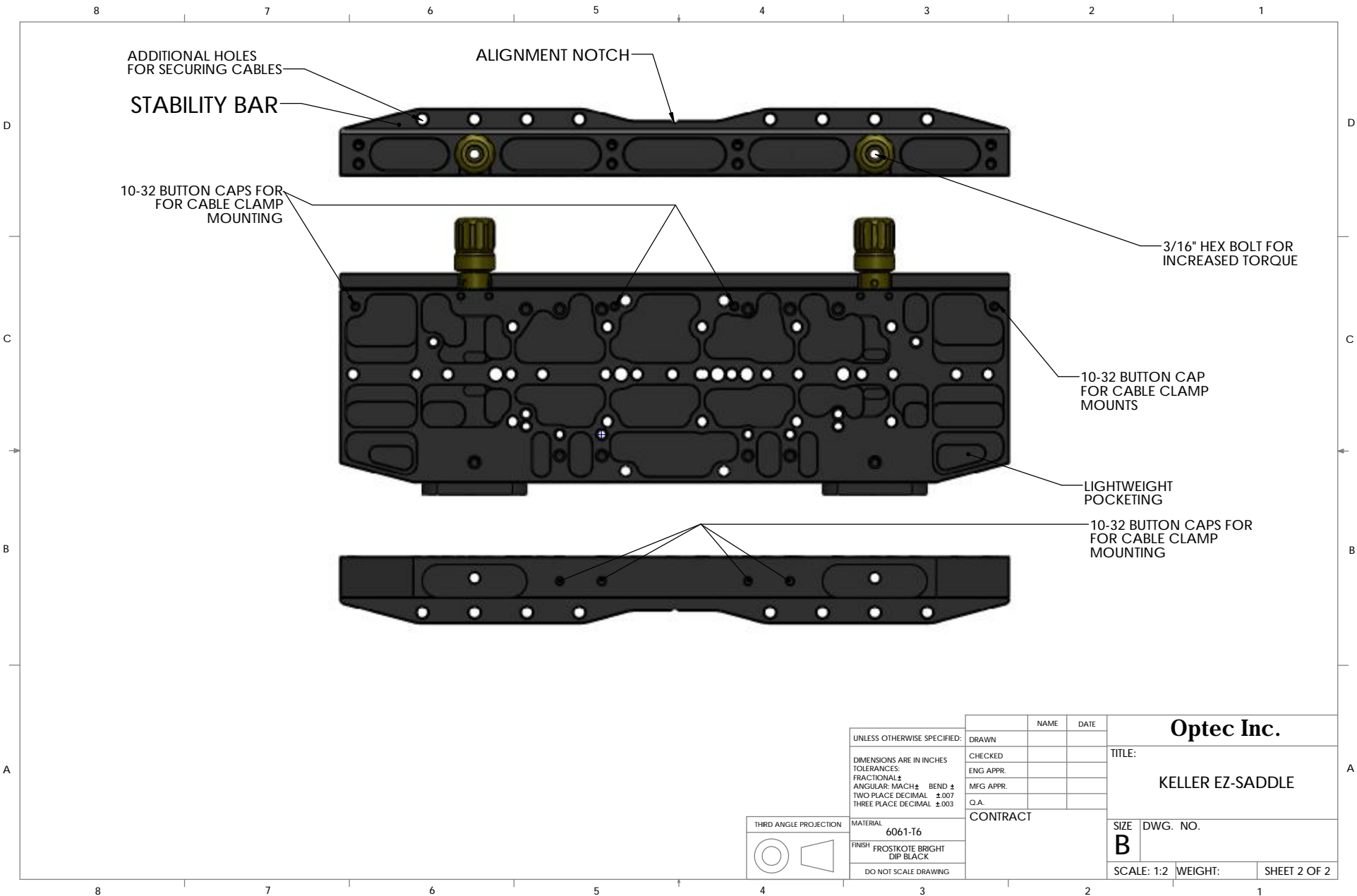
5

4

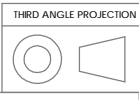
3

2

1



UNLESS OTHERWISE SPECIFIED: DIMENSIONS ARE IN INCHES TOLERANCES: FRACTIONAL ± ANGULAR: MACH ± BEND ± TWO PLACE DECIMAL ±.007 THREE PLACE DECIMAL ±.003	DRAWN	NAME	DATE	<b>Optec Inc.</b>  TITLE: <b>KELLER EZ-SADDLE</b>
	CHECKED			
	ENG APPR.			
	MFG APPR.			
	Q.A.			SIZE DWG. NO.
	CONTRACT			<b>B</b>
				SCALE: 1:2 WEIGHT: SHEET 2 OF 2



MATERIAL  
**6061-T6**

FINISH  
FROSTKOTE BRIGHT  
DIP BLACK

DO NOT SCALE DRAWING