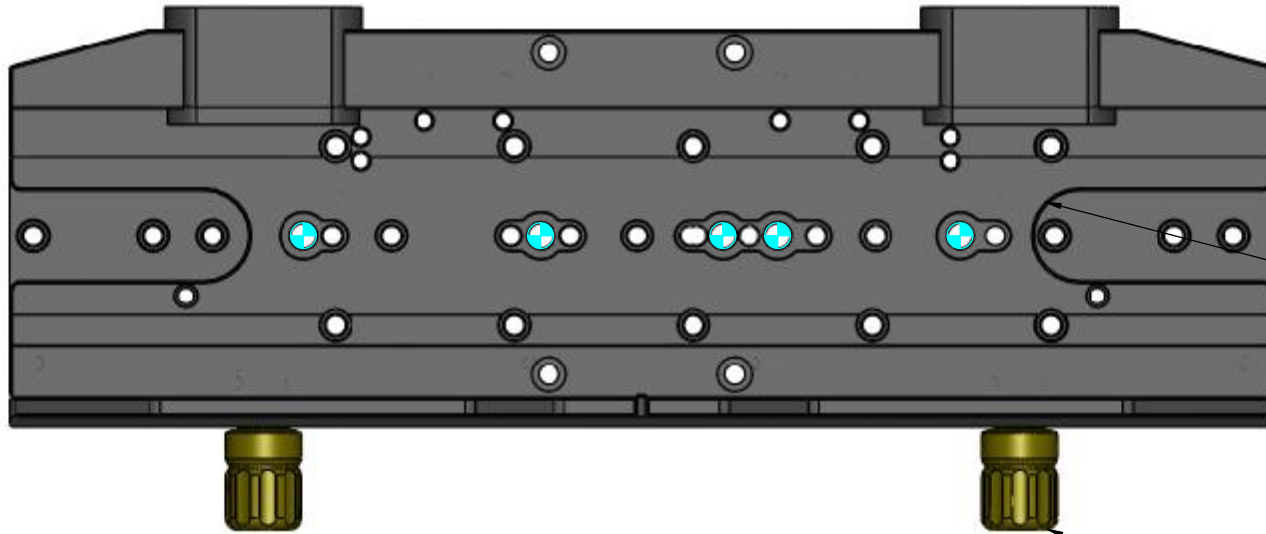


STOCK NO. 19242
KELLER EZ-SADDLE

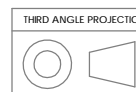


NOTCH FOR D PLATE
1/4-20 SAFETY BOLT

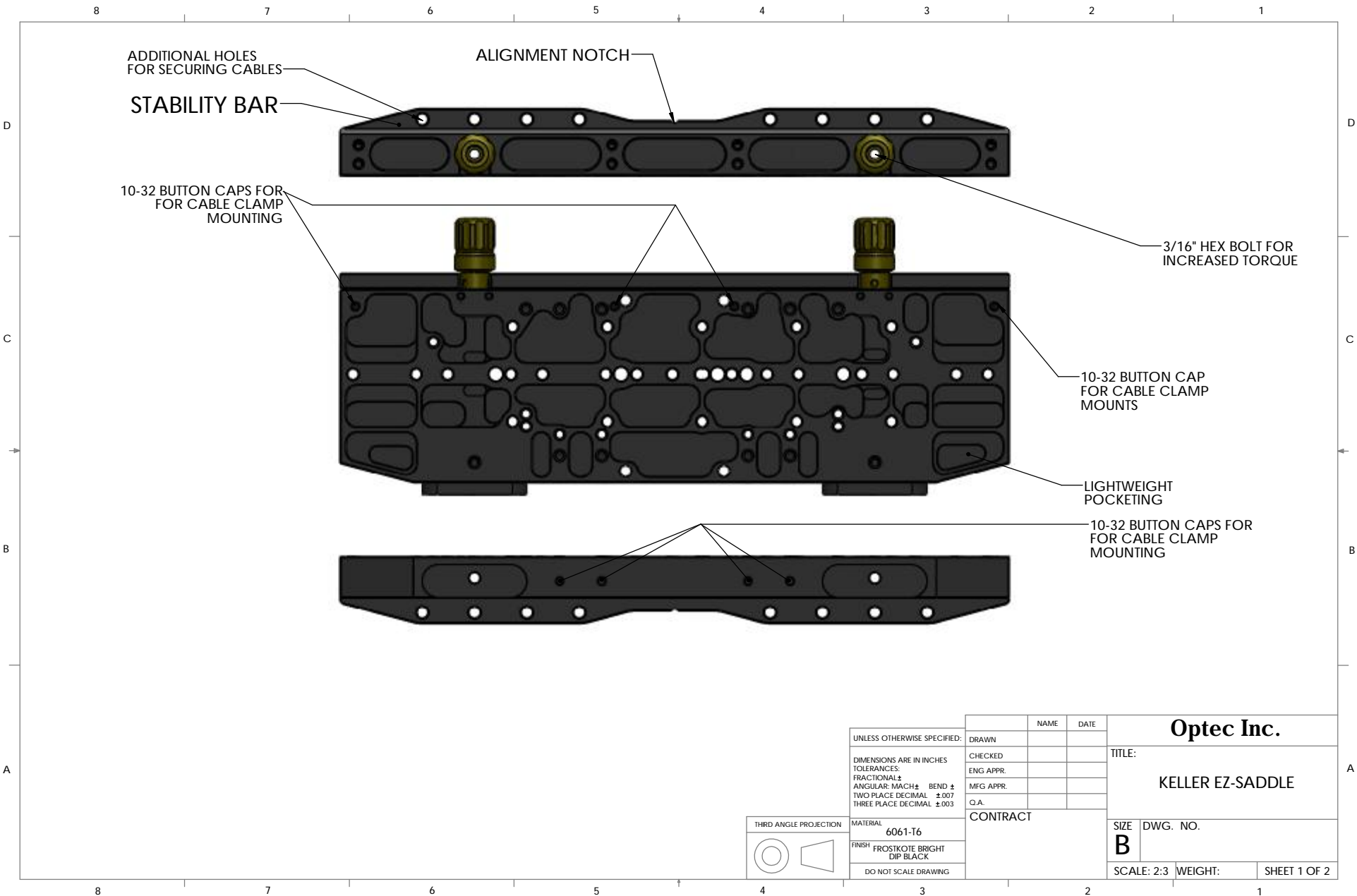
KNOBS ON OPPOSITE
SIDE OF CLAMPS FOR
STABLE LOADING AND
UNLOADING

LOSMANDY G11
TWO 2-HOLE LOCATIONS AVAILABLE

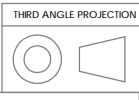
BOLT KIT INCLUDES:
TWO (2) 5/16-18 x 7/8" STAINLESS SHCS



UNLESS OTHERWISE SPECIFIED: DIMENSIONS ARE IN INCHES TOLERANCES: FRACTIONAL ± ANGULAR: MACH ± BEND ± TWO PLACE DECIMAL ±.007 THREE PLACE DECIMAL ±.003	DRAWN	NAME	DATE	Optec Inc. TITLE: KELLER EZ-SADDLE
	CHECKED			
	ENG APPR.			
	MFG APPR.			
	Q.A.			SIZE DWG. NO.
MATERIAL 6061-T6	CONTRACT			B
FINISH SEE NOTES				SCALE: 2:3 WEIGHT:
DO NOT SCALE DRAWING				SHEET 1 OF 2



UNLESS OTHERWISE SPECIFIED: DIMENSIONS ARE IN INCHES TOLERANCES: FRACTIONAL ± ANGULAR: MACH ± BEND ± TWO PLACE DECIMAL ±.007 THREE PLACE DECIMAL ±.003	DRAWN	NAME	DATE	Optec Inc. TITLE: KELLER EZ-SADDLE
	CHECKED			
	ENG APPR.			
	MFG APPR.			
	Q.A.			
CONTRACT				SCALE: 2:3 WEIGHT: SHEET 1 OF 2



MATERIAL
6061-T6

FINISH
FROSTKOTE BRIGHT
DIP BLACK

DO NOT SCALE DRAWING