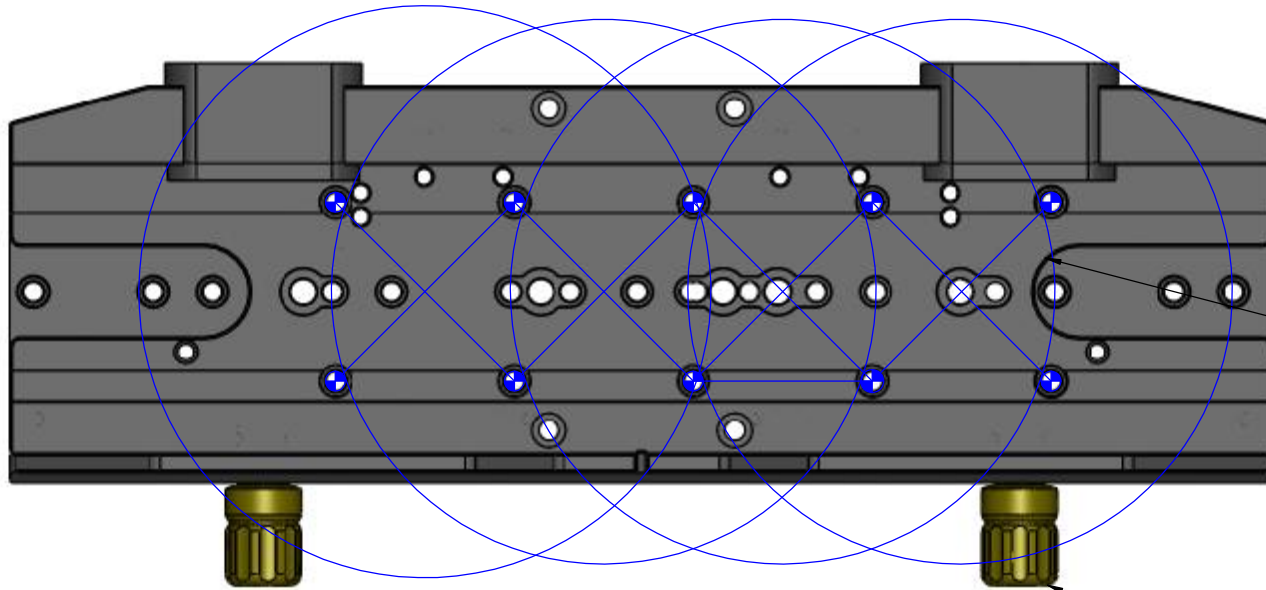


STOCK NO. 19245
KELLER EZ-SADDLE

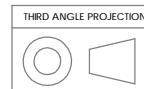


NOTCH FOR D PLATE
1/4"-20 SAFETY BOLT

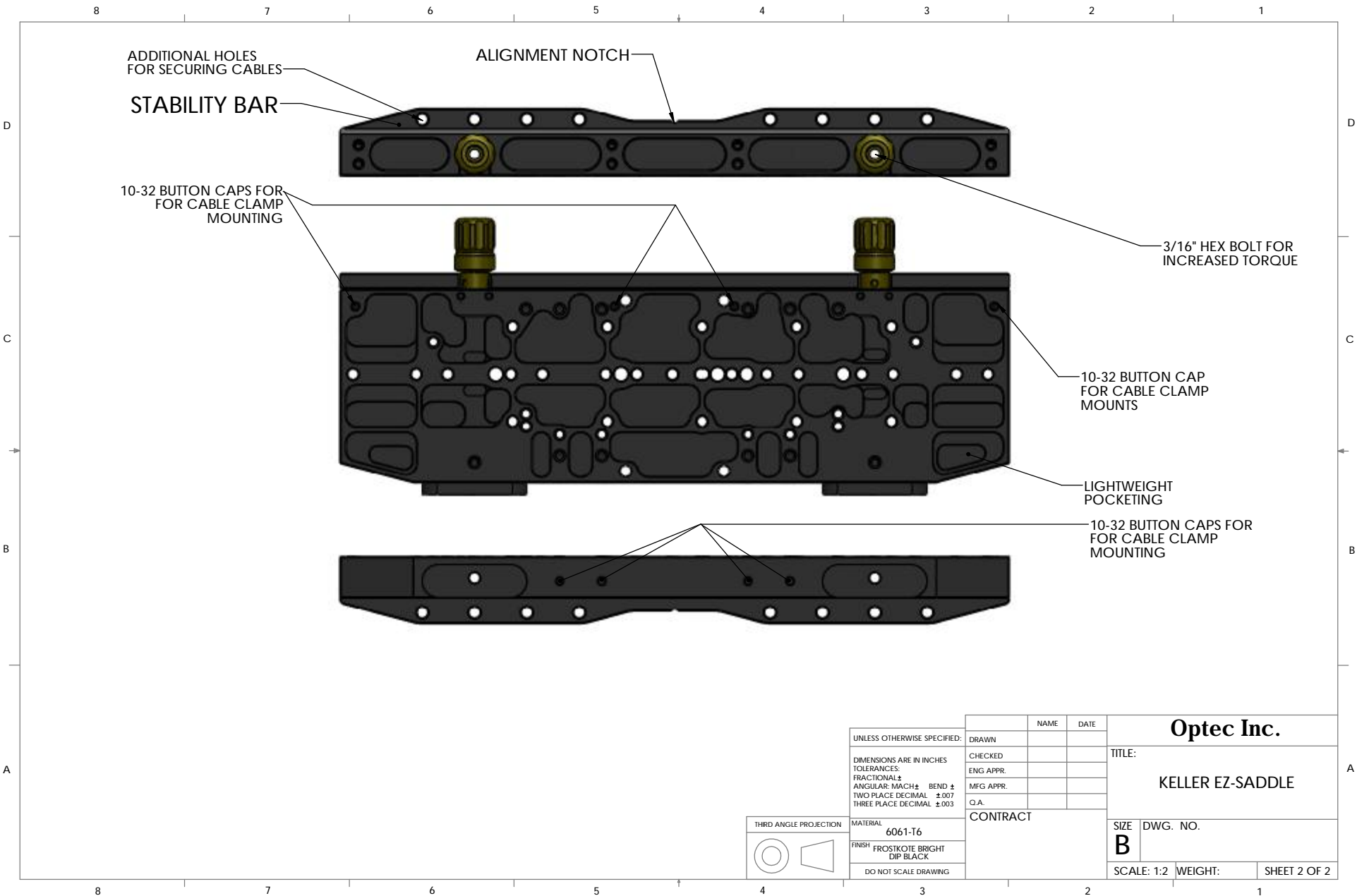
KNOBS ON OPPOSITE
SIDE OF CLAMPS FOR
STABLE LOADING AND
UNLOADING

PLANEWAVE ASCENSION 200 AND 200HR MOUNT
FOUR 4-HOLE LOCATIONS AVAILABLE

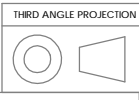
BOLT KIT INCLUDES:
FOUR (4) 1/4"-20 X 1" SHCS



UNLESS OTHERWISE SPECIFIED: DIMENSIONS ARE IN INCHES TOLERANCES: FRACTIONAL ± ANGULAR: MACH ± BEND ± TWO PLACE DECIMAL ±.007 THREE PLACE DECIMAL ±.003	DRAWN	NAME	DATE	Optec Inc.	
	CHECKED				TITLE:
	ENG APPR.				KELLER EZ-SADDLE
	MFG APPR.				SIZE DWG. NO.
MATERIAL 6061-T6	CONTRACT			B	
FINISH SEE NOTES				SCALE: 2:3 WEIGHT: SHEET 1 OF 2	
DO NOT SCALE DRAWING					



UNLESS OTHERWISE SPECIFIED: DIMENSIONS ARE IN INCHES TOLERANCES: FRACTIONAL ± ANGULAR: MACH ± BEND ± TWO PLACE DECIMAL ±.007 THREE PLACE DECIMAL ±.003	DRAWN	NAME	DATE	Optec Inc. TITLE: KELLER EZ-SADDLE
	CHECKED			
	ENG APPR.			
	MFG APPR.			
	Q.A.			SIZE DWG. NO.
	CONTRACT			B
				SCALE: 1:2 WEIGHT: SHEET 2 OF 2



MATERIAL
6061-T6

FINISH
FROSTKOTE BRIGHT
DIP BLACK

DO NOT SCALE DRAWING